

Glass fiber post system in canal

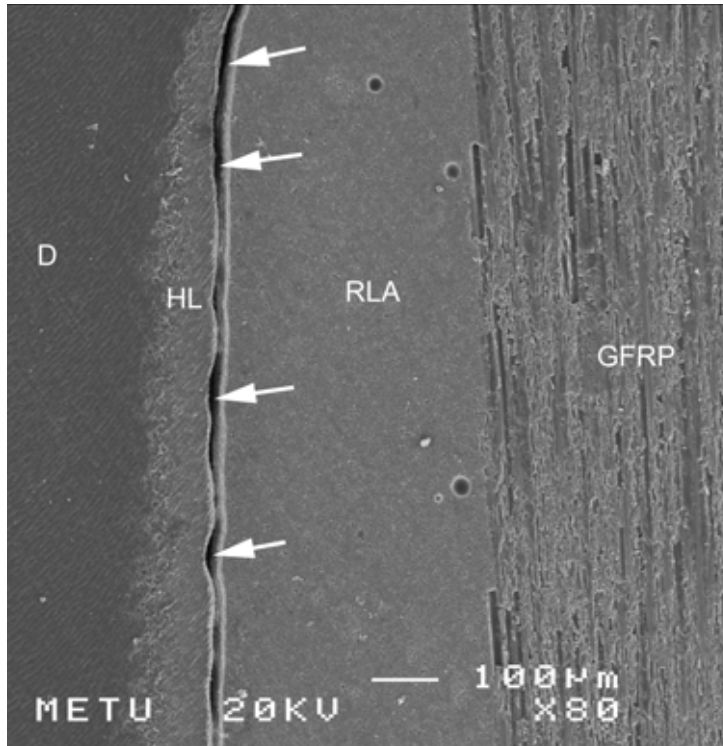


Fig. 1. D: Dentin; HL: Hybrid layer;
RLA: Resin based luting agent;
GFRP: Glass fiber reinforced post.
Arrows indicates detachment

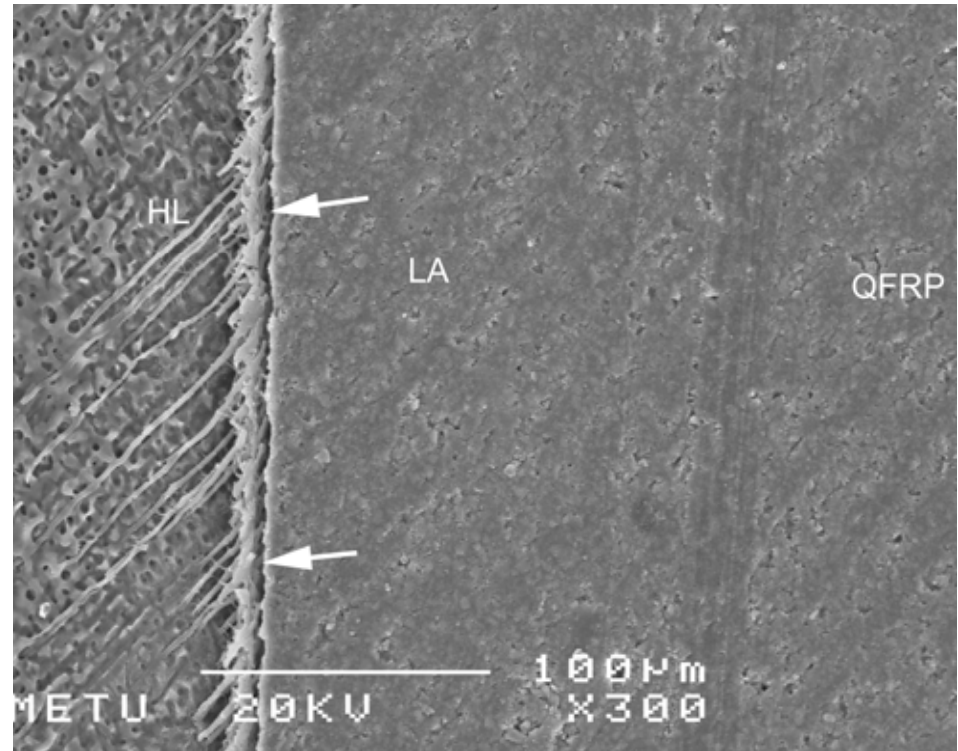


Fig. 2. D: Dentin; HL: Hybrid layer;
LA: Resin based luting agent;
QFRP: Glass fiber reinforced post.
Arrows indicates detachment

Ribbon post system in canal

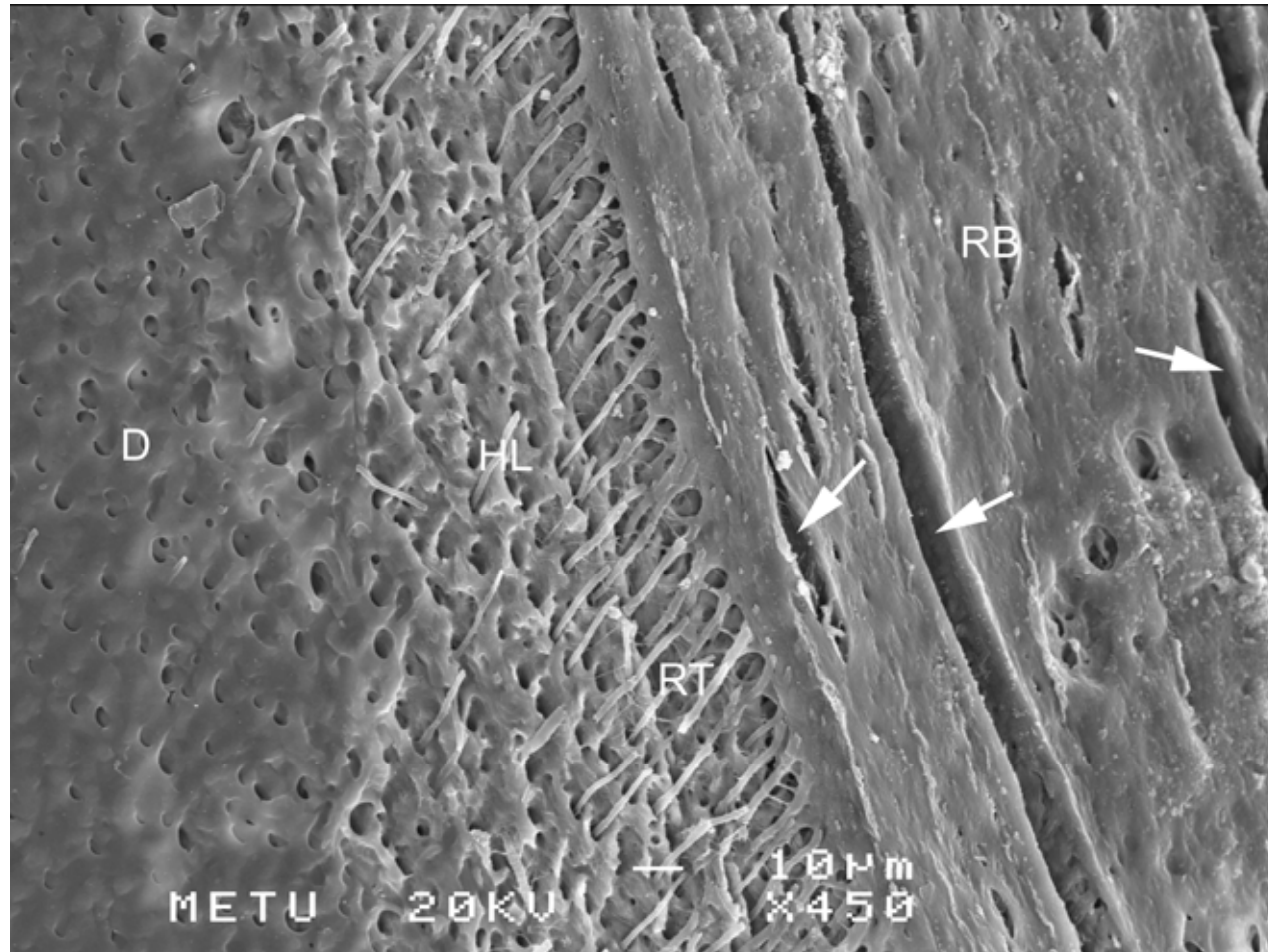
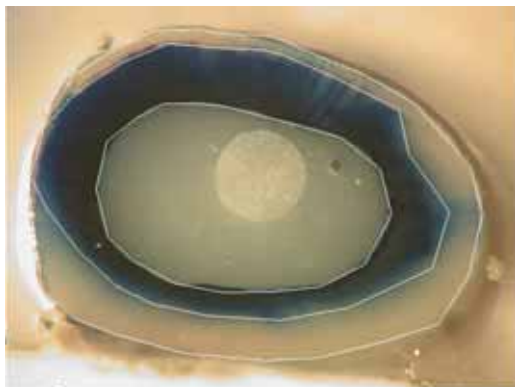
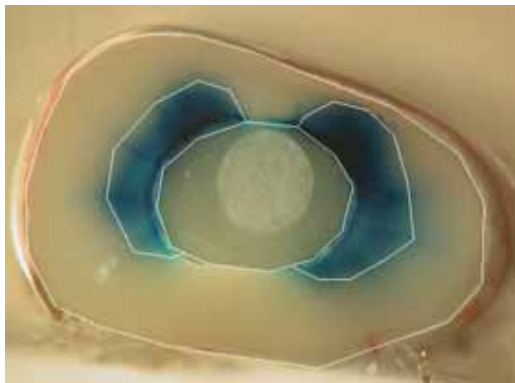
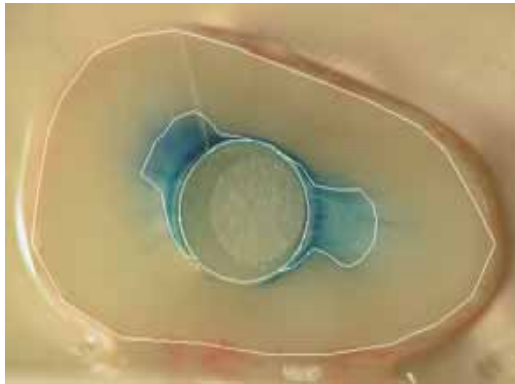


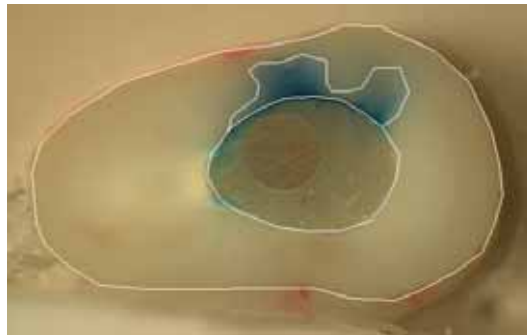
Fig.3. D: Dentin; HL: Hybrid layer; LA: Resin based luting agent; RB: Polyethylene fiber reinforced post. Arrows indicates detachment

Leakage

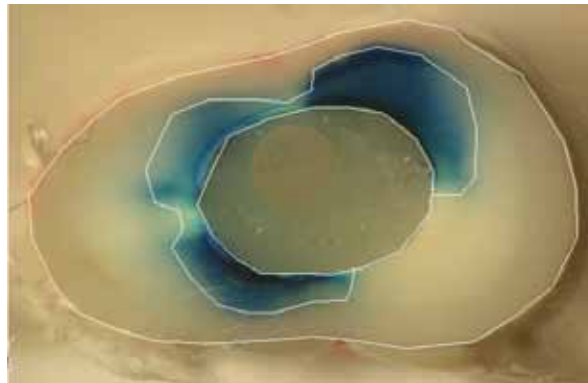
Glass Fibre reinforced prefabricated post.



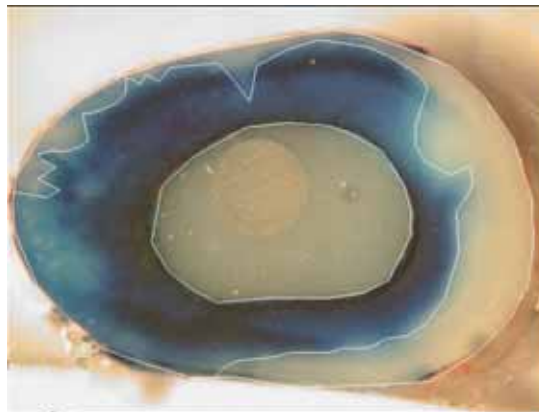
Quartz fibre reinforced prefabricated post



APICAL SECTION



MIDDLE SECTION



CORONAL SECTION

Ribbon

